



## HardLine™ Silencers

Lightweight, efficient, and robust method for achieving sound attenuation. HardLine silencers are bolted to either the inlet or outlet of auxiliary fans. Typically applied to both ends of the fan or on a single end between the fan and sound sensitive location.

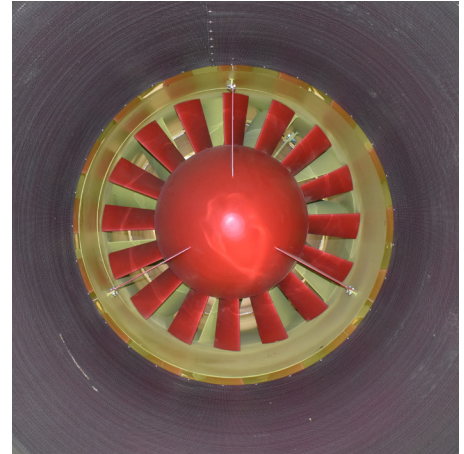
### FEATURES

- Silencer construction includes casing, insulation and steel inner liner
- Bolt patterns can be included on flange or easily drilled on-site
- Insulation is composed of FR material that is not affected by moisture
- Silencer sizes up to 55" diameter



### HARDLINE ADVANTAGE

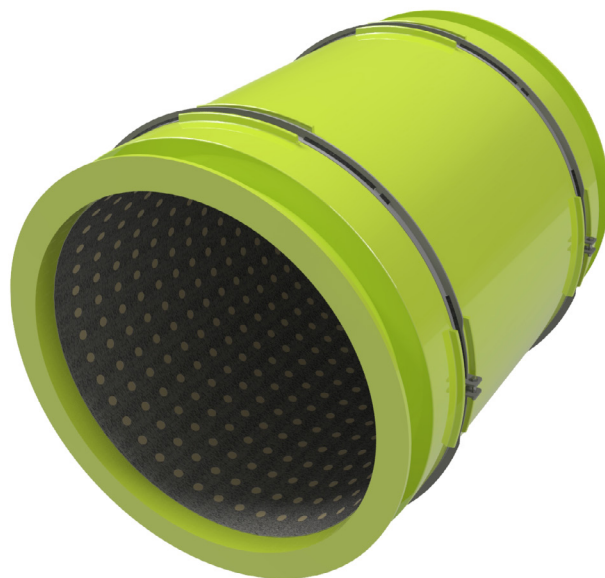
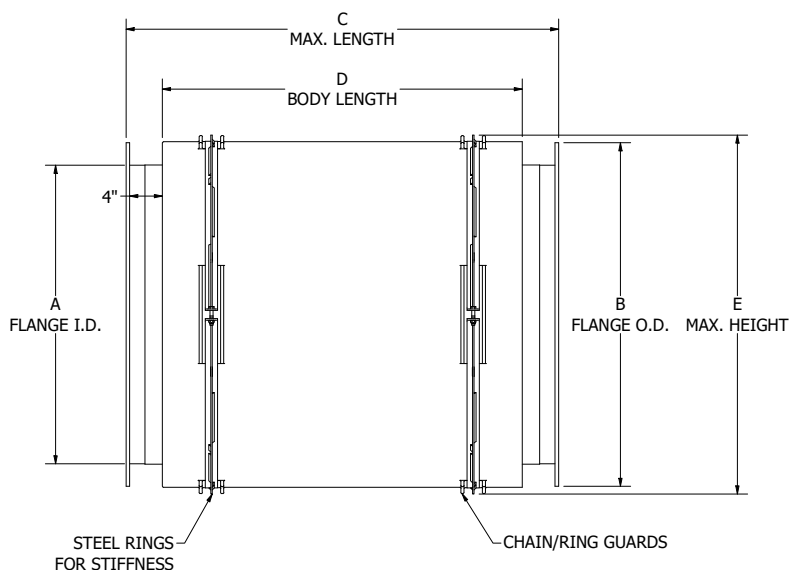
- Casing manufactured out of ABC's proprietary polymer, Rigidex FR
- Rigidex FR casing absorbs vibration further increasing the sound attenuation
- Durable Hardline Silencers bounce back from equipment impact or dropping
- Units are less than half the weight of their steel counterparts
- Shorter lengths allow for easy installs while maintaining a high decibel reduction
- Equivalent to podded silencer performance, without the airflow restrictions





## HardLine™ Silencers

### DIMENSIONS



SIZE [in]	A [in]	B [in]	C [in]	D [in]	E [in]	WEIGHT [lb]
30	30	36	52.875	44	37.875	140
36	36	42	52.875	44	43.875	195
40	40	46	64.875	56	49.875	270
48	48	54	76.875	68	55.875	340
54	54	60	76.875	68	61.875	385

### SOUND ATTENUATION

- Sound intensity tests have been carried out to determine precise and reliable levels of sound reduction for the HardLine Silencer. The table below lists the dB reductions for each octave band.

OCTAVE BAND	63 Hz	125Hz	250Hz	500Hz	1000 Hz	2000 Hz	4000 Hz	8000 Hz
ATTENUATION VALUE [dB]	-5.2	-8.8	-10.1	-15.6	-17.1	-16.6	-12.7	-17.9